

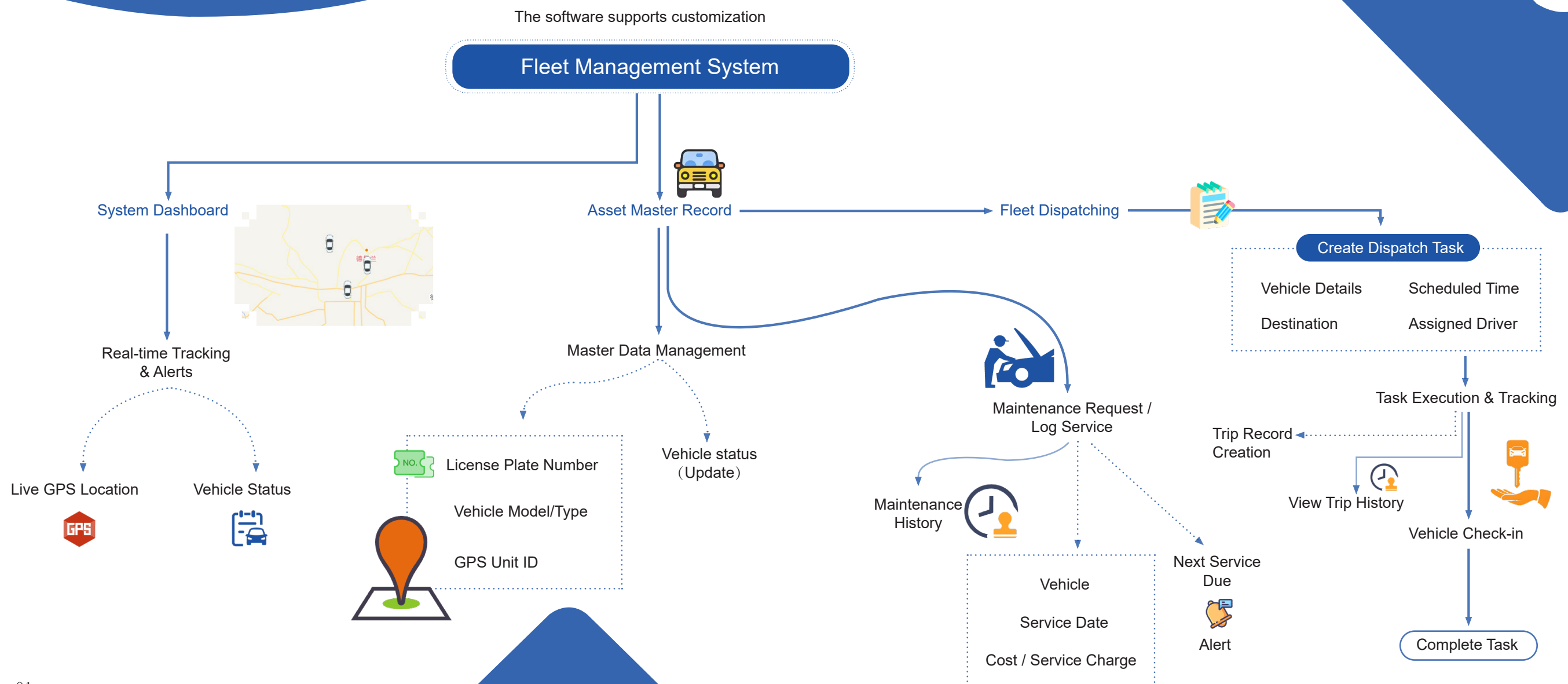


FLEET MANAGEMENT PLATFORM

The fleet management platform is an integrated system that enables comprehensive digital lifecycle management of vehicles, covering the entire workflow from documentation and real-time monitoring to dispatch and maintenance, thereby empowering fleets to reduce operational costs, enhance efficiency, and ensure safety.

APPLICATION SCENARIOS

The platform is applicable to a wide range of organizations and scenarios that require centralized and precise management of multiple vehicles, spanning sectors including logistics transportation, public transit, municipal services, specialized transport, corporate fleets, and engineering machinery.



FUNCTIONAL DESCRIPTION

Global Real-time Monitoring

Track vehicle locations and status in real time on the map to support efficient dispatching and rapid response to incidents.

Vehicle Profile Management

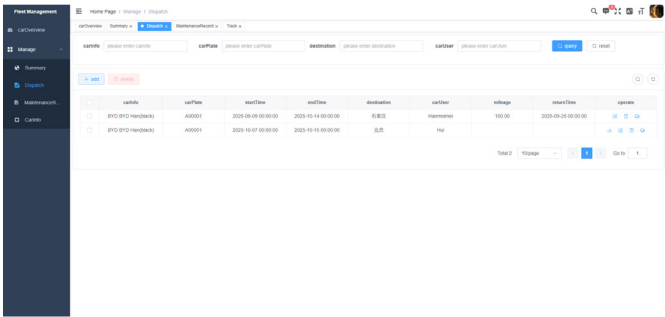
Centrally manage core vehicle information to provide an accurate data foundation for dispatching and maintenance.

Full-cycle Dispatch Tracking

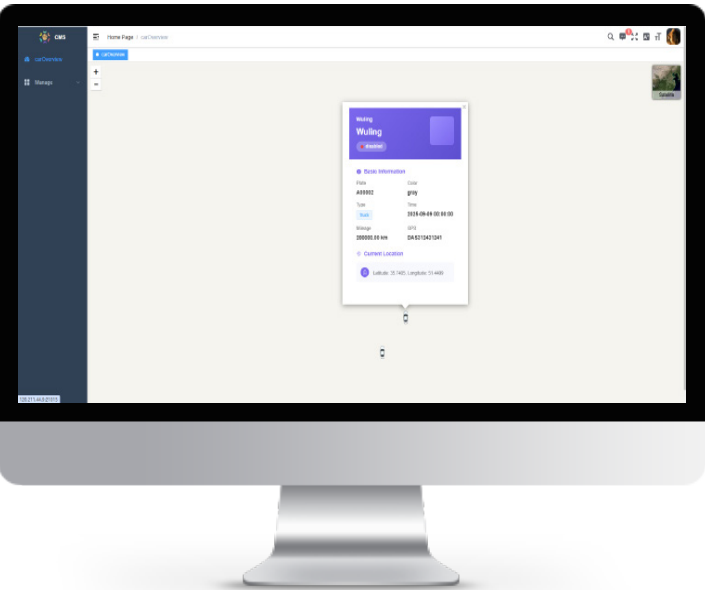
Log complete task processes and travel routes to achieve operational closure and efficiency improvement.

Standardized Maintenance with Alerts

Systematically manage maintenance records with automated reminders to ensure vehicle safety and compliance.



Vehicle	License	Model	Year	Color	Capacity	Status	Location	Time
8102-0101 (MANHATTAN)	AJ0001	2024-08-08 00:00:00	2024-11-14 00:00:00	6.8L	Manhattan	100.00	2024-08-25 00:00:00	100.00
8102-0102 (MANHATTAN)	AJ0001	2024-10-07 00:00:00	2024-11-14 00:00:00	6.8L	Man	100.00	2024-08-25 00:00:00	100.00



DELIVERABLES

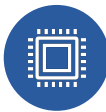
Localized Deployment:

1. Permanent system usage license certificate
2. Operation manuals for various roles in the system
3. Training videos and operation guides
4. System deployment environment documentation
5. Deployment, installation, and debugging services
6. Design of historical data migration scheme
7. Source code/executable package (optional)

SaaS Cloud Deployment



Customer-specific data isolation certificate



Dedicated customer instance deployment and configuration



System login account and permission allocation



Online data import and verification



Online system operation training courses



Real-time remote guidance service



System automatic update and maintenance



Daily data backup and security monitoring



Customer service support and problem response



ABOUT US

Shijiazhuang Glit Electronic Technology Co., Ltd. Founded in February 2012, is a high-tech enterprise specializing in the Internet of Things (IoT) field. With innovation at its core, we provide global clients with integrated digital solutions for customer relationship management, warehouse operations, fleet management, and engineering implementation. Our services help enterprises achieve seamless, intelligent workflows and advance the integration of IoT into diverse industries. Supported by an experienced R&D team with full-stack capabilities from sensor design to cloud integration, we incorporate IoT, cloud computing, AI, digital twins, and automation control to deliver tailored IoT solutions to our clients.

We provide our clients with end-to-end intelligent IoT services spanning data collection, transmission, and analysis, meeting diverse needs for smart monitoring and intelligent services. By deeply integrating cutting-edge technology with real-world application scenarios, we help clients enhance operational efficiency and reduce management costs.

DEVELOPMENT TEAM

We maintain an integrated hardware and software R&D team, structured to manage every stage from design to delivery. The team includes specialists in project management, design, engineering, development, testing, and implementation.

Tailored Solutions: Custom architecture & implementation

Priority Support: Fast-response channel & regular reviews

Predictable Costing: Phased investment aligned with business value

Growth Partnership: Your digital transformation partner for the long term



CONTACT US

Shijiazhuang Glit Electronic technology Co., Ltd.

Website: <https://www.e-glit.cn>

Whatsapp: +8618632156883

Email: manager@e-glit.com

Address: Room 501, Zhonghua Building, 707 Lianmeng Road, Xinhua District, Shijiazhuang City